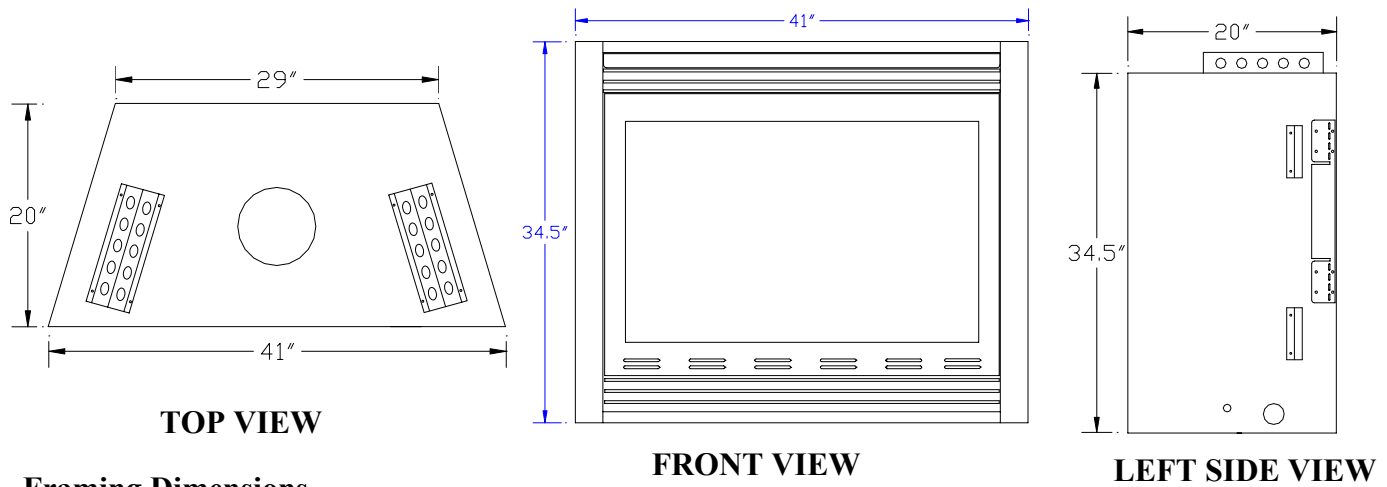
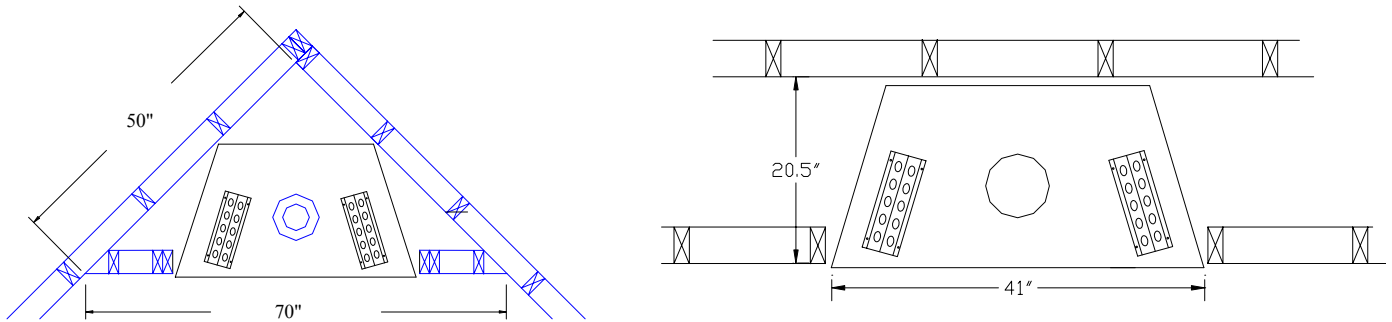


# THE TAMARRON 42 SERIES FIREPLACE SPECIFICATIONS AND INSTALLATION INFORMATION

## Fireplace Dimensions



## Framing Dimensions

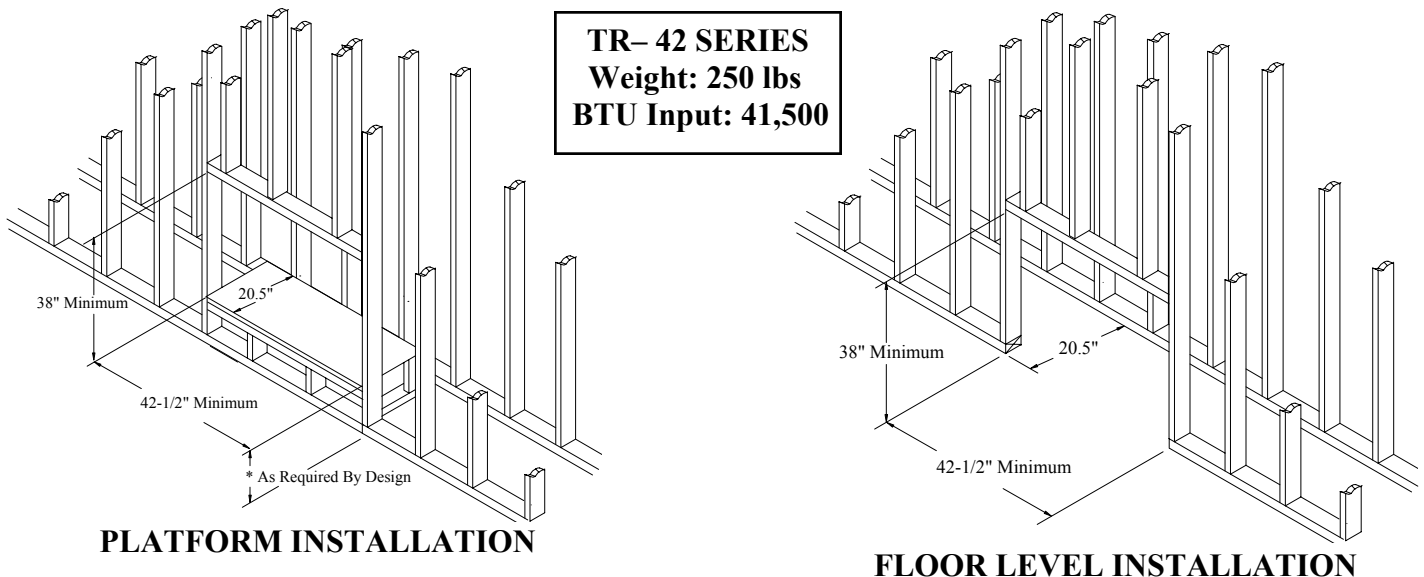


## WALL OR CHASE INSTALLATION

## CORNER INSTALLATION

The TR Series is a zero-clearance fireplace. The fireplace has spacers attached to assist in a correct installation. Combustible materials may touch the spacers, but must never be notched, cut, or modified to come closer to the appliance than the spacers allow.

## Minimum Opening



The above framing diagram does not show a hearth. A hearth is not required, but often used with this appliance. If a hearth is desired, it must be constructed so as not to inhibit the valve access door at the bottom of the appliance. The hearth need not conform to codes applicable to solid fuel appliances.

## System Specifications

### Gas Input Rating:

Nat. Gas	41,500
Propane	38,000

### Rated Manifold Pressure:

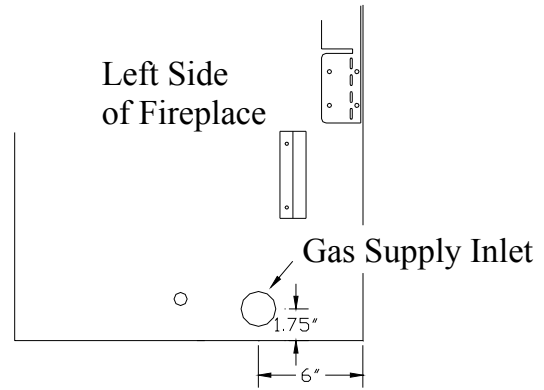
Nat. Gas	3.5" w.c.
Propane	10" w.c.

### Minimum Gas Line Pipe Size: 1/2"

### Electrical : 120 V.A.C.

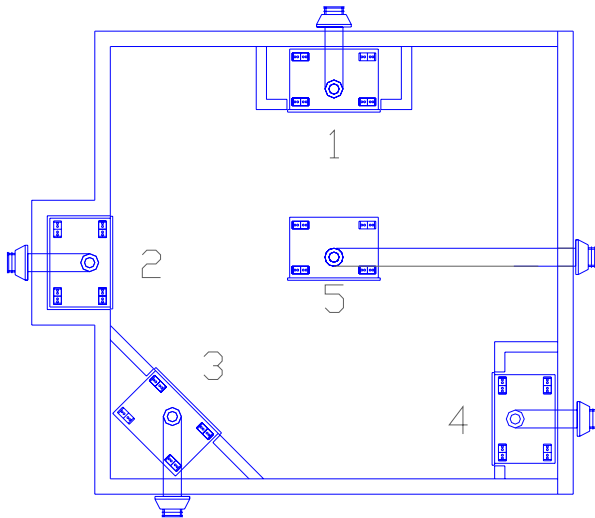
### Amperage Rating: 2 Amps max.

## Gas Supply Line Location



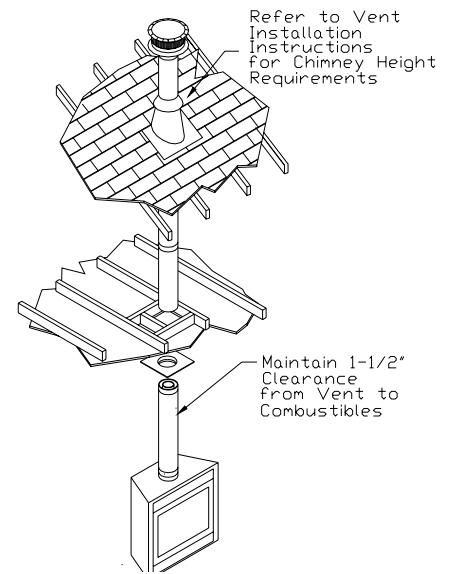
### GAS LINE SUPPLY

## Venting Requirements



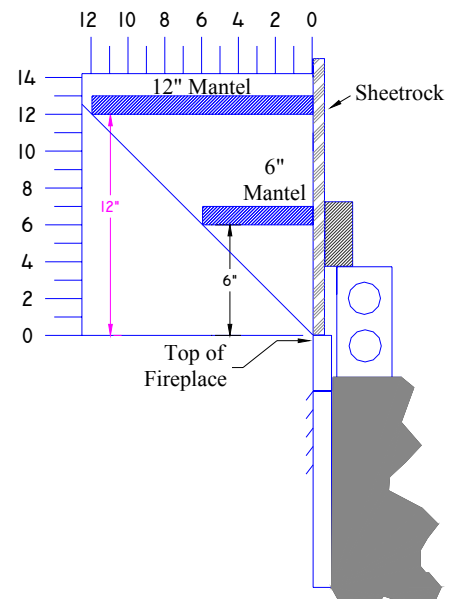
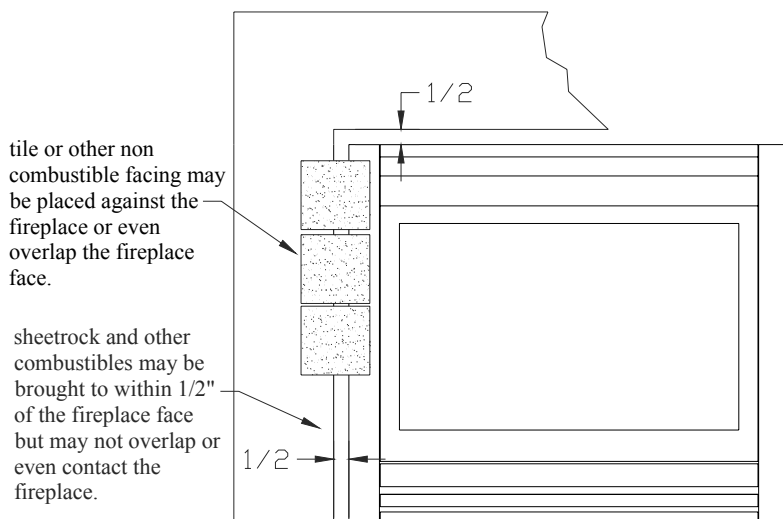
### Horizontal Venting Options

**Alpine TR series products have been tested extensively for venting options of up (4) 90 degree elbows or (8) 45 degree elbows. Contact your local Alpine retailer for more information about the many venting options possible with Alpine TR Products.**



### Vertical Venting

## Facing and Mantel Requirements



### Mantel Clearances

Side View of Fireplace